

logi.cals®

logi.DOC

## New Features in logi.DOC V5.2

### NEW, SUPPORTED OPERATING SYSTEMS:

- Windows 7 Professional (32-bit)
- Windows 7 Ultimate (32-bit)

and 64-bit

logi.cals Austria  
Mailüfterlweg 1, 3124 Oberwölbling  
ÖSTERREICH  
T: +43 2786 77147  
F: +43 2786 77147-16  
E: [info@logicals.com](mailto:info@logicals.com)  
I: [www.logicals.com](http://www.logicals.com)

logi.cals Germany  
Poststraße 53, 40764 Langenfeld  
DEUTSCHLAND  
T: +49 2173 9191-0  
F: +49 2173 9191-19  
E: [germany@logicals.com](mailto:germany@logicals.com)  
I: [www.logicals.com](http://www.logicals.com)

logi.cals®  
all the more power



## NEW BUTTONS IN THE TOOLBARS

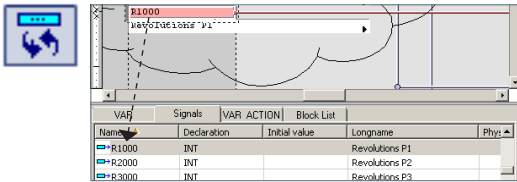


set block, delete block + reconnect lines

align FBD-elements



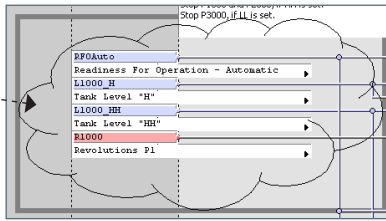
if this button is enabled: synchronize view in variable declaration editor



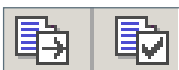
## SHAPE-ELEMENTS (e.g. CLOUDS) in FBD-EDITOR



switch the layer by these buttons:

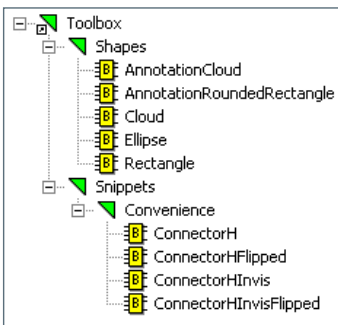


## NEW BUTTONS IN DOCUMENTS-EDITOR

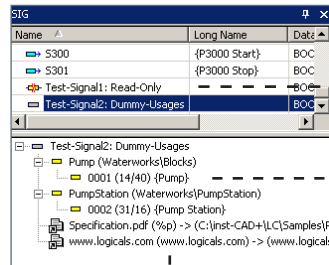


export documentation, check documentation

## LIBRARY „TOOLBOX“



## CONFIGURE SIGNALS



write-protection

manual references

external references

## GENERABLE DOCUMENTATION FOR ALL OBJECTS

user-defined documentation for the project

Waterworks (Project)

If Waterworks is operated and running, a container is filled with water by pumps.

Navigation

Name

Documentation

Targets

Waterworks

with a section to navigate through the project docu

documentation for a folder

Documentation (Folder)

The structuring folder Documentation contains documents-objects combining the POUs and presenting different views onto the documentation.

Navigation

Name

Up

PumpStation

Waterworks

Waterworks\_SimTst

link „Up“ jumps one docu-level up

Waterworks (Library)

The library Waterworks contains all necessary sub-libraries and POUs for the project.

Navigation

Name

Up

Blocks

PumpStation

documentation for a library

Pump (Function Block)

Navigation

Name

Up

Blocks

PumpStation

documentation for a POU

See documentation „New Features of logi.DOC“ for more information and what else is new in logi.DOC V5.2. Also watch the **videos** representing the most important features of V5.2. This documentation can be found after installing logi.DOC in the „logi.DOC Control Center“ under „Documentation“ and on the logi.cals website under: <http://www.logicals.com/downloads/manuals/>