



**INCREASE YOUR  
PRODUCTIVITY!**



**logi.cals**<sup>®</sup>  
all the more power



[www.logicals.com](http://www.logicals.com)

## The Method. Our Mission Statement

logi.cals increases your productivity – automatically & reliably, easily & independently.

logi.cals makes value-added software solutions. Clear in structure and logic, and with cross-platform modules, logi.cals' solutions strive for optimal results. Together with its OEM partners, logi.cals develops products that can meet the highest quality and performance demands of end customers.

## The Result. Our Vision

An enthusiastic user community makes logi.cals a leading company for automation software worldwide.

Trustworthy communication is an essential condition for successful co-operation. logi.cals' OEM partners provide valuable customer-driven input and in return, get tailor-made market specific solutions. To give customers a competitive edge, logi.cals fully takes onboard their philosophies and strategies. Co-operative exchange of information and data guarantees continuous development and improvement.

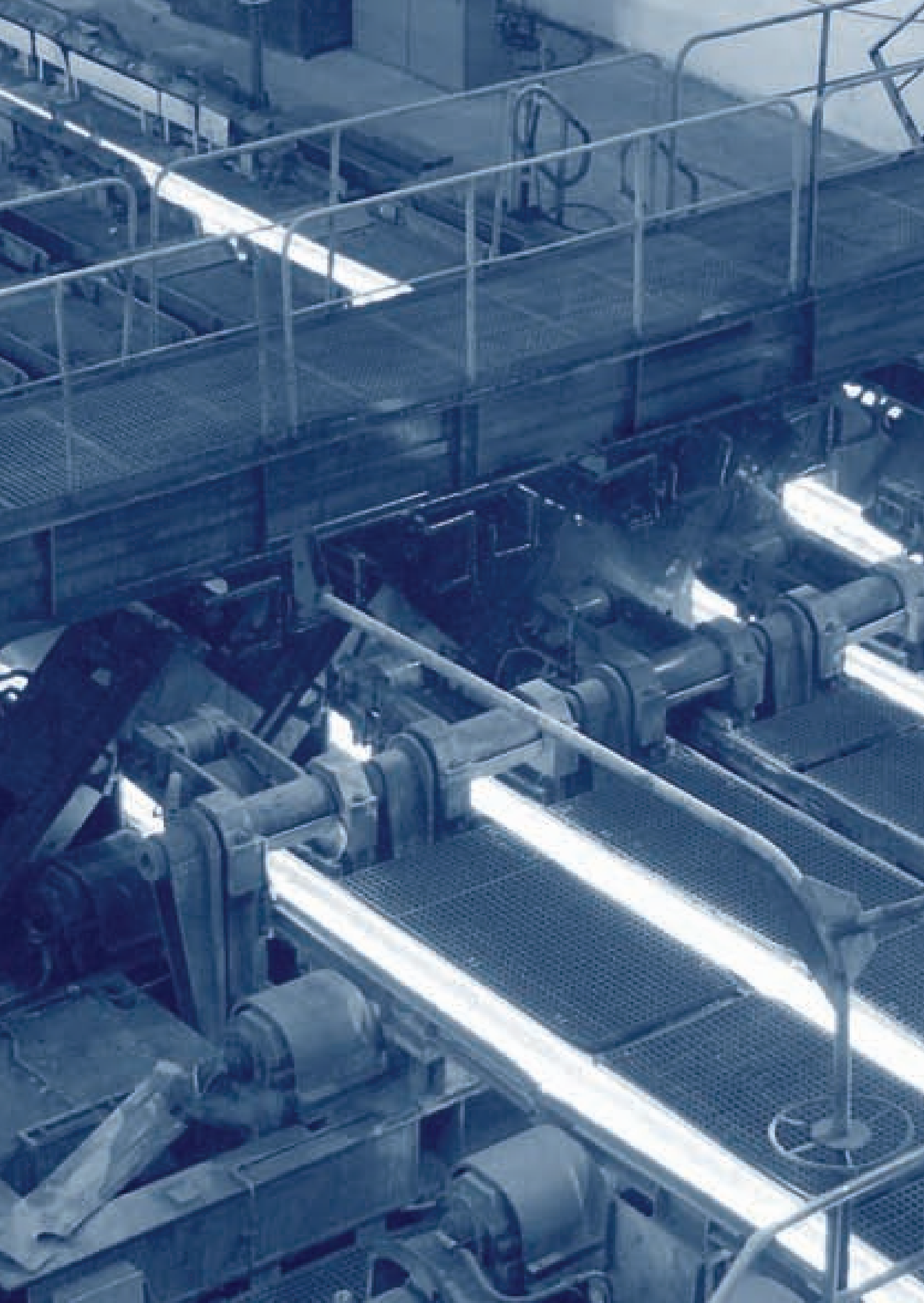
## The Formula. Our Values

Reliability x Competence x Innovation =  
logi.cals power

With logi.cals, organisation and methodology are the key corner stones. Under these conditions, ideas and technology are united to form a comprehensive whole. Reliability, competence and innovation underpin daily thoughts and action – in the field of research & development as well as in tangible projects and assignments.









## Automation with Partners

The development of intelligent, hardware-independent software tools for automation technology is logi.cals' core competence. logi.cals can therefore guarantee target-oriented management of joint-development projects. For its partners, logi.cals acts as an Original Equipment Manufacturer (OEM) and meets all partner demands under their respective brand names.

Using their own know-how, OEM partners can also independently develop their own adaptations while using the active support of experienced logi.cals developers. logi.cals undertakes research, development and projects on behalf of many well-known global customers in the field of automation. Top quality guaranteed – automatically & reliably, easily & independently!





## Core Piece of Engineering

Automation environments are the main focus of modern engineering processes. logi.cals is working continuously to refine the development of tools and components for the purpose of optimizing the entire automation engineering process, i.e. from functional specification to programming to visualization to testing. In addition, logi.cals offers tools that support customers with commissioning, operating and maintaining industrial plants.

Ready-made modules and target-system plug-ins allow the fast realization of complete systems and beyond just executing control functions also takeover and support visualization, monitoring and diagnostic tasks.



## **The Tools**

**logi.CAD:** As an open and powerful system logi.CAD can meet the demanding requirements of OEMs and can be seamlessly integrated into most engineering environments. logi.CAD allows easy handling of complex and heterogeneous programming according to IEC 61131-3 and a multitude of other standards.

**logi.CODE:** Provides well-engineered modules for the configuration of target systems. It contains all functions for creating target system applications, code generation, target system loading and testing.

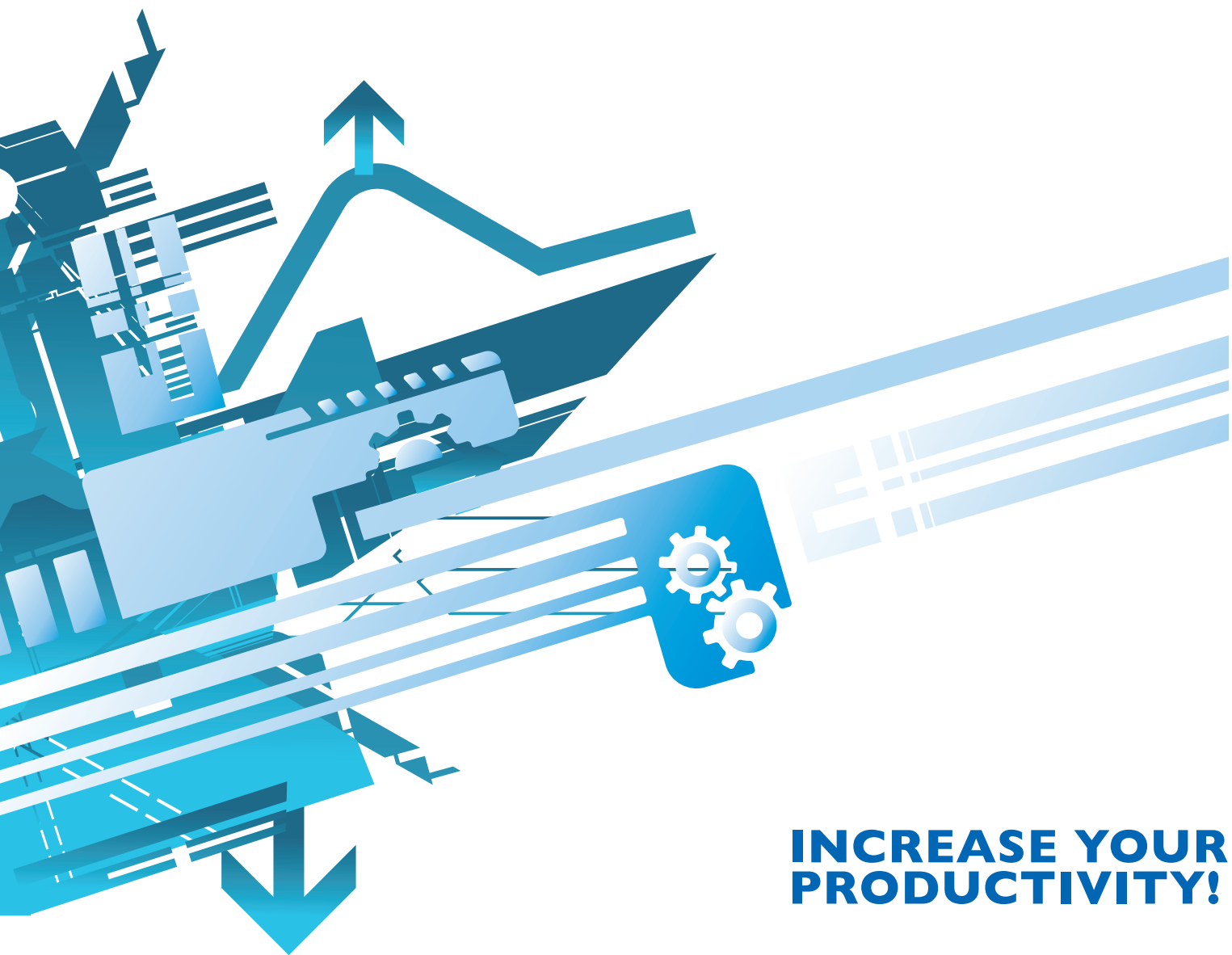
**logi.RTS:** Connects the automation application with the operating system of the target hardware on the one hand and the target system with the programming environment on the other. It allows multi-tasking and multi-resourcing, i.e. several virtual controls on one CPU, as well as online-testing and name serving.

**logi.VIS:** Is a scalable visualization system, which consists of an editor, server and runtime system for both local operation and remote monitoring.

**logi.GUARD:** Is an open condition monitoring platform for innovative maintenance concepts.

**logicals – all the more power**





**INCREASE YOUR  
PRODUCTIVITY!**

**logi.cals Austria**

Mailüfterlweg 1, 3124 Oberwölbling, AUSTRIA

T: +43 2786 77147

F: +43 2786 77147-16

E: [info@logicals.com](mailto:info@logicals.com)

I: [www.logicals.com](http://www.logicals.com)

**logi.cals Germany**

Poststrasse 53, 40764 Langenfeld, GERMANY

T: +49 2173 9191-0

F: +49 2173 9191-19

E: [germany@logicals.com](mailto:germany@logicals.com)

I: [www.logicals.com](http://www.logicals.com)

**IMPRINT**

Responsible for content:

Heinrich Steininger, logi.cals Austria kirchner SOFT GmbH,

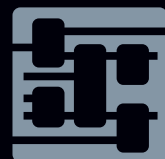
3124 Oberwölbling, Austria

Photos: 2009 Shutterstock Inc.

Concept: Das Kommunikationshaus Bad Aussee, [www.kommhaus.com](http://www.kommhaus.com)

Text and layout: Media Enterprise, [www.mediaenterprise.at](http://www.mediaenterprise.at)

**logi.cals®**  
all the more power



[www.logicals.com](http://www.logicals.com)