

All the more tools

AUTOMATION

logi.CAD

Engineering

The hardware-independent automation platform allows easy handling of even complex and heterogeneous automation projects. It supports you with planning and programming according to IEC 61131-3 and a multitude of other standards.

logi.VIS

Visualization

The visualization platform logi.VIS is a perfect add-on for logi.CAD. Individual design of visualization tasks is done quickly and easily.

logi.RTS

Runtime Environment I

Runtime system logi.RTS connects the automation application with the operating system of the target hardware. Multi-tasking and resourcing, i.e. several virtual controls on one CUP, is standard of logi.RTS.

Shortly: support for IEC 61508 up to SIL3 and EN ISO 13849!

logi.µRTS

Runtime Environment II

PLC runtime system logi.µRTS maps resources that are engineered in logi.CAD to single-tasking systems.

logi.SIL

The Key to Safety

Simply enhance your standard engineering environment with logi.SIL and integrate safety in your engineering process. The innovative safety package allows safety applications up to IEC 61508 SIL 3 and ISO 13849 PL-a-e.

DOCUMENTATION

logi.DOC®

Function Plan Tool

logi.DOC describes the function of a proposed plant and documents its behaviour. You decide according to which standard function plans will be created, Namur NA50, VGB-R170 C, ISA S5.2, IEC 61131-3, VDI/VDE 3696 or DIN 60848 (DIN 40719), or according to your own standard.

logi.CED

Cause-and-Effect

The engineering tool logi.CED creates cause-and-effect tables. It realizes causes before they cause damage.

logi.DICT

Multi-lingual

The database driven solution for projects in foreign languages or multi-lingual projects.

INTEGRATION

logi.ASB

Integration

Engineering Environment Integration for more productivity in complex automation projects.

SOLUTIONS

logi.PLC

System Solutions

Based on logi.cals software products and the hardware products of partners.

logi.GUARD

Condition Monitoring

An open platform that perfectly combines Condition Monitoring and automation. The tool was developed together with Messfeld GmbH and monitors the condition of plants and machines.

Efficient Cause-and-Effect Engineering

logi.cals automation solutions & services GmbH
Mailüfterlweg 1, 3124 Oberwölbling, ÖSTERREICH
T: +43 2786 77147
F: +43 2786 77147-16
E: info@logicals.com
I: www.logicals.com

logi.cals automation solutions & services GmbH
Poststraße 53, 40764 Langenfeld, DEUTSCHLAND
T: +49 2173 9191-0
F: +49 2173 9191-19
E: germany@logicals.com
I: www.logicals.com

IMPRESSUM

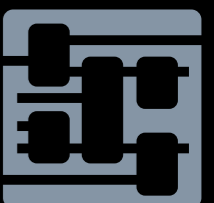
Responsible for content:
Heinrich Steininger, logi.cals automation solutions & services GmbH,
3124 Oberwölbling, Austria
Photos: logicals GmbH Austria, Fotolia, 2009 Shutterstock Inc.
Concept: Das Kommunikationshaus Bad Aussee, www.kommhaus.com
Editing, Text and Layout: Media Enterprise, www.mediaenterprise.at

logi.cals®
all the more power



www.logicals.com

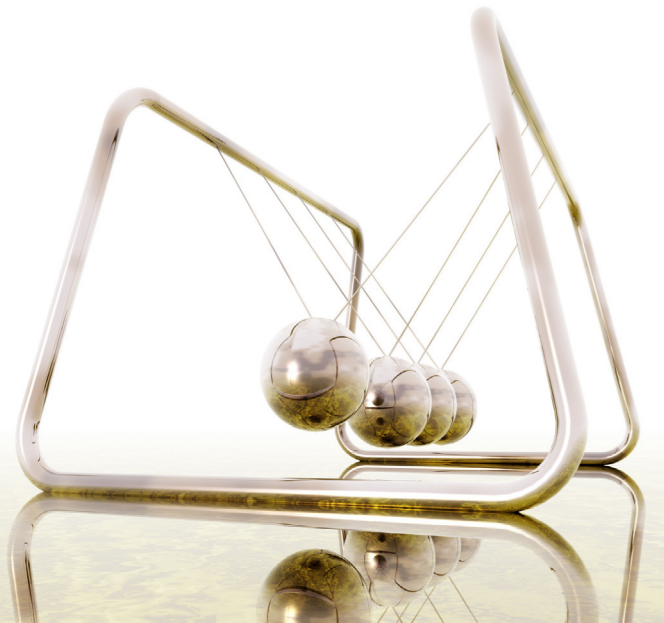
logi.cals®
all the more power



www.logicals.com

Editor for easy and clear development of cause-and-effect tables

In modern plant engineering, switching operations are becoming more and more complex, but overview tends to get lost. PLC programs and security systems grow steadily. Cause-and-effect tables reduce the workload for design and documentation, eliminate error causes and provide an easy-to-read description of the interlocking logics „on site“. The solution:



Editing in its entire variety

Cause-Editor, Effect-Editor, Action-Editor, Notes-Editor, Logic Block-Editor, View-Editor (Action view), X-View-Editor (cross-classified table), Online-View-Editor (OPC Runtime), Logic-View-Editor, SAFETY-Views, Control-Narrative-Editor, Usage of tree views, revision management, Excel-export, PDF-export.

OPC Interface - the idea

Via a database connection the status of process signals can be displayed during runtime. Colour coding of logic and analogue signals helps with verification of actions.

Drag-and-drop to configure Views

Per simple drag-and-drop all elements of the different views (tables and views) can be changed and ex-changed.

Automatic generation by help of place holders/wildcards

A function with wildcard „@“ has been integrated to allow the generation of a higher number of causes and effects. This function is also available for all fields.

Effective import and export functions

One of the many features of the import function is to guarantee an automatic reconciliation of data throughout the whole development cycle. For example, the export function passes the data on to Excel. Printing itself is done under Excel.

Easy search/replace also in combination with filter functions

All elements in a cause or effect table can be found and replaced via the pop-up menu, also by using the filter.

Filter and sort as required

Various options for a filtered view. Sorting with (+), (-) allows to reverse the sort order.

Generating views from filters

Views are generated automatically from the set filter.

Control-Narratives as manuals

Database driven generation of PDF, DOC as manuals for cause-and-effect tables.

SAFETY-code generation

Code generation for SAFETY solution logi.SIL developed by logi.cals.

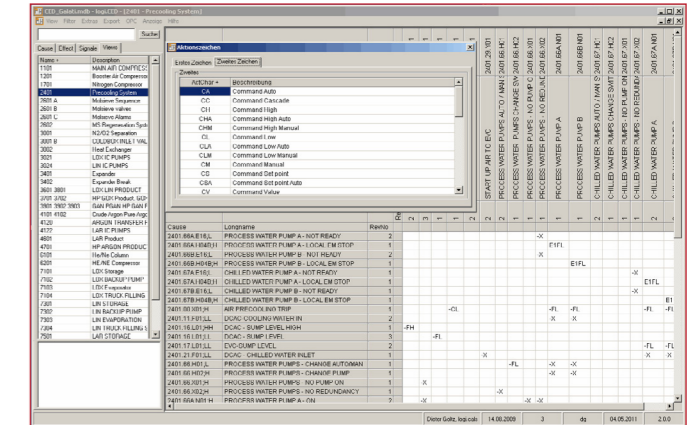
PLC-code generation

PLC-code generation for logi.RTS, the portable runtime system developed by logi.cals.

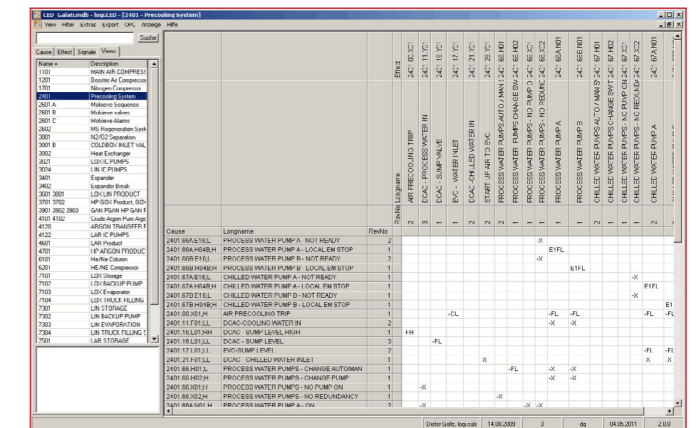
Productivity

- Uses an open relational database
- User-friendly editing of cause-and-effect tables
- Consistent view for design and documentation
- Test and monitoring via OPC interface
- Freely selectable actions
- Various cause-and-effect table types
- Generates cause-and-effect tables automatically
- Easy creating views by drag-and-drop
- Extensive import and export functions (for passing on data to e.g. Excel, for print-out)
- Automatic generation of causes and effects
- Comprehensive revision control system (delta comparison)
- Cause-and-effect toolbox as an integral element of logi.DOC and logi.CAD
- Use with logi.DOC and logi.CAD Offline Simulation
- Creating Watchpages (online table) from logi.DOC and logi.CAD
- Automatically generated log file
- Extensive help functions
- Extensive sort and filter functions
- Search and replace functions
- Generating tree views
- Creating control-narratives as manuals for cause-and-effect tables
- SAFETY-code generation for logi.SIL
- Code generation for the PLC runtime system logi.RTS incl. Online-Test

logi.CED Action Chars

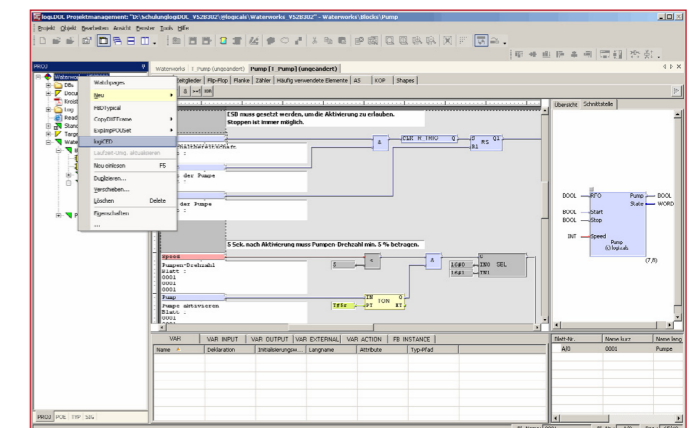


logi.CED Action View



logi.CED Editor

Start und Signalübernahme aus logi.DOC



Intelligent database

All information on logi.CED is stored in a database. Via the database several sort and filter functions are available. Therefore, you can get a quick overview and execute queries on cross information.

Revision Management at its best

logi.CED provides a revision management of main and sub revision. Within a main revision you can create any number of sub revisions. After revisioning, delta comparison is available.

Integrative toolbox

Integration of the toolbox in logi.DOC, the function plan tool, and logi.CAD, the programming system, developed by logi.cals.