

## All the more tools

### AUTOMATION

#### logi.CAD

##### Engineering

The hardware-independent automation platform allows easy handling of even complex and heterogeneous automation projects. It supports you with planning and programming according to IEC 61131-3 and a multitude of other standards.

#### logi.VIS

##### Visualization

The visualization platform logi.VIS is a perfect add-on for logi.CAD. Individual design of visualization tasks is done quickly and easily.

#### logi.RTS

##### Runtime Environment I

Runtime system logi.RTS connects the automation application with the operating system of the target hardware. Multi-tasking and resourcing, i.e. several virtual controls on one CPU, is standard of logi.RTS.

Shortly: support for IEC 61508 up to SIL3 and EN ISO 13849!

#### logi.µRTS

##### Runtime Environment II

PLC runtime system logi.µRTS maps resources that are engineered in logi.CAD to single-tasking systems.

#### logi.SIL

##### The Key to Safety

Simply enhance your standard engineering environment with logi.SIL and integrate safety in your engineering process. The innovative safety package allows safety applications up to IEC 61508 SIL 3 and ISO 13849 PL-a-e.

### DOCUMENTATION

#### logi.DOC®

##### Function Plan Tool

logi.DOC describes the function of a proposed plant and documents its behaviour. You decide according to which standard function plans will be created, Namur NA50, VGB-R170 C, ISA S5.2, IEC 61131-3, VDI/VDE 3696 or DIN 60848 (DIN 40719), or according to your own standard.

#### logi.CED

##### Cause-and-Effect

The engineering tool logi.CED creates cause-and-effect tables. It realizes causes before they cause damage.

#### logi.DICT

##### Multi-lingual

The database driven solution for projects in foreign languages or multi-lingual projects.

### INTEGRATION

#### logi.ASB

##### Integration

Engineering Environment Integration for more productivity in complex automation projects.

### SOLUTIONS

#### logi.PLC

##### System Solutions

Based on logi.cals software products and the hardware products of partners.

#### logi.GUARD

##### Condition Monitoring

An open platform that perfectly combines Condition Monitoring and automation. The tool was developed together with Messfeld GmbH and monitors the condition of plants and machines.

# logi.VIS

The web based, upgradeable visualization solution

logi.cals automation solutions & services GmbH  
Mailüfterlweg 1, 3124 Oberwölbling, ÖSTERREICH  
T: +43 2786 77147  
F: +43 2786 77147-16  
E: info@logicals.com  
I: www.logicals.com

logi.cals automation solutions & services GmbH  
Poststraße 53, 40764 Langenfeld, DEUTSCHLAND  
T: +49 2173 9191-0  
F: +49 2173 9191-19  
E: germany@logicals.com  
I: www.logicals.com

#### IMPRESSUM

Responsible for content:  
Heinrich Steininger, logi.cals GmbH Austria,  
3124 Oberwölbling, Austria  
Photos: logicals GmbH Austria, Fotolia, 2009 Shutterstock Inc.  
Concept, Text and Layout:  
Das Kommunikationshaus Bad Aussee, www.kommhaus.com

logi.cals®  
all the more power



www.logicals.com

logi.cals®  
all the more power



www.logicals.com

logi.VIS™ is a modular, scalable and smart visualization system. It provides safe and easy access to options and diagnostic information of automation systems for maintenance engineers and users.



### Features

- Create/change visualization applications
- Use runtime data of automation systems in them
- Upload visualizations to a web server
- Easily visualize logi.VIS applications in the Internet Explorer or
- in the stand-alone application logi.VIS™ Runtime



### The Advantages of Your New Visualization Solution

- logi.VIS™ minimizes costs and workload for creating/managing visualizations.
- You can access your visualization page as fast as your favorite internet site. Just enter the web address (URL) of the visualization page in the web browser. Any standard Windows workstation can access the visualization pages and therefore visualize runtime data (corresponding access rights assumed).
- Under Windows, just .NET Framework 2.0 and Internet Explorer Version 6.0 must be provided. Under Windows CE, .NET Compact Framework 2.0 Service Pack 1 must be available.
- Linux versions are available on request.
- Visualizations created with logi.VIS™ can be enhanced as you need.
- Only the essential parts of the visualization are run in the automation system (e.g. data acquisition services). Compute-intensive parts (creation and connection of the visualization) are run in the browser (on PC or a panel). Only PLC and visualization station are required. No hidden servers, no OPC. Just standard web technology.

### Create/Upload Visualizations

You create/change visualization projects with the easy-to-use logi.VIS™ Editor. There you link the visualization elements; with variables of the automation system, for instance. The open, XML-based data format provides access to visualization data also for third party products and opens the way to a (partly) automated creation of visualization projects. The installation of the visualization application is done by a wizard.

### Visualization Components

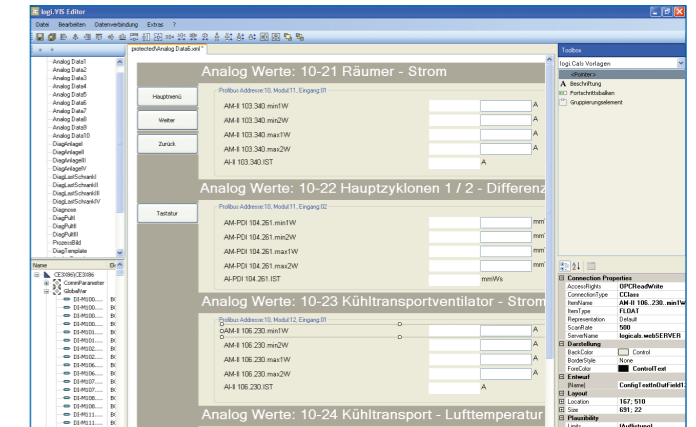
Data from the automation system are retrieved by help of the logi.cals®-product webSERVER. The components logi.VIS™ Runtime and logi.VIS™ Server are installed by default and take over the visualization of the runtime data. That means no extra installations are required on the automation system and the client computer, if you use the Internet Explorer.

### logi.VIS™ Editor

With the logi.VIS™ Editor you create or change your visualization pages

The logi.VIS™ Editor provides ready-made control elements for easy design of your visualization applications. Editing and layout functions help you realize professional layouts within a short time. The assignment of active visualization elements to the runtime data is also done in the logi.VIS™ Editor. Just drag a variable from the tag browser to a control element - the assignment is established. Finally, the logi.VIS™ Editor helps you transfer the visualization project to the automation system.

Create visualization with the logi.VIS™ Editor

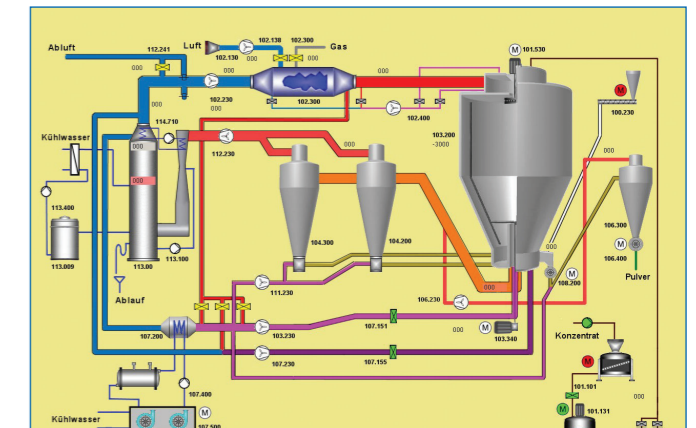


### logi.VIS™ Runtime

Monitor and operate the automation systems with logi.VIS™ Runtime

logi.VIS™ Runtime is the runtime environment, in which runtime data of an automation system is visualized. In addition, the logi.VIS™ Runtime includes a stand-alone viewer application for representing visualizations. You can use the viewer application of the logi.VIS™ Runtime as an alternative to the Internet Explorer, i.e. as a replacement for the web browser.

Monitor and operate the automation systems with logi.VIS™ Runtime



### logi.VIS™ Server

The logi.VIS™ Server provides user-interface control elements and plug-ins for the provision of runtime and project data from the automation systems.

Practical use on touch panels or mobile terminal devices under Windows CE

### logi.VIS™ Viewer

Practical use on touch panels or mobile terminal devices under Windows CE

logi.VIS™ Viewer is a stand-alone application for visualizations.

